

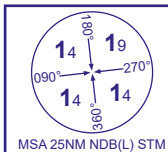
## SCILLY ISLES/ST MARY'S

## SCILLY ISLES/ST MARY'S

**NDB(L)**

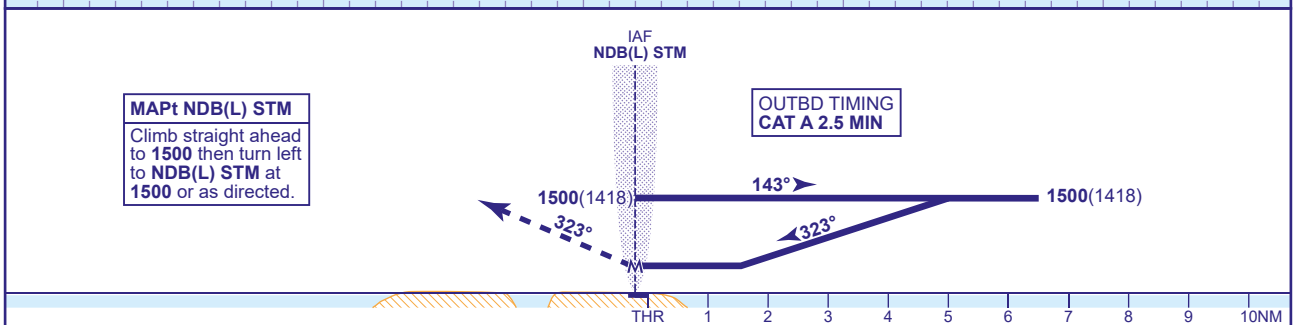
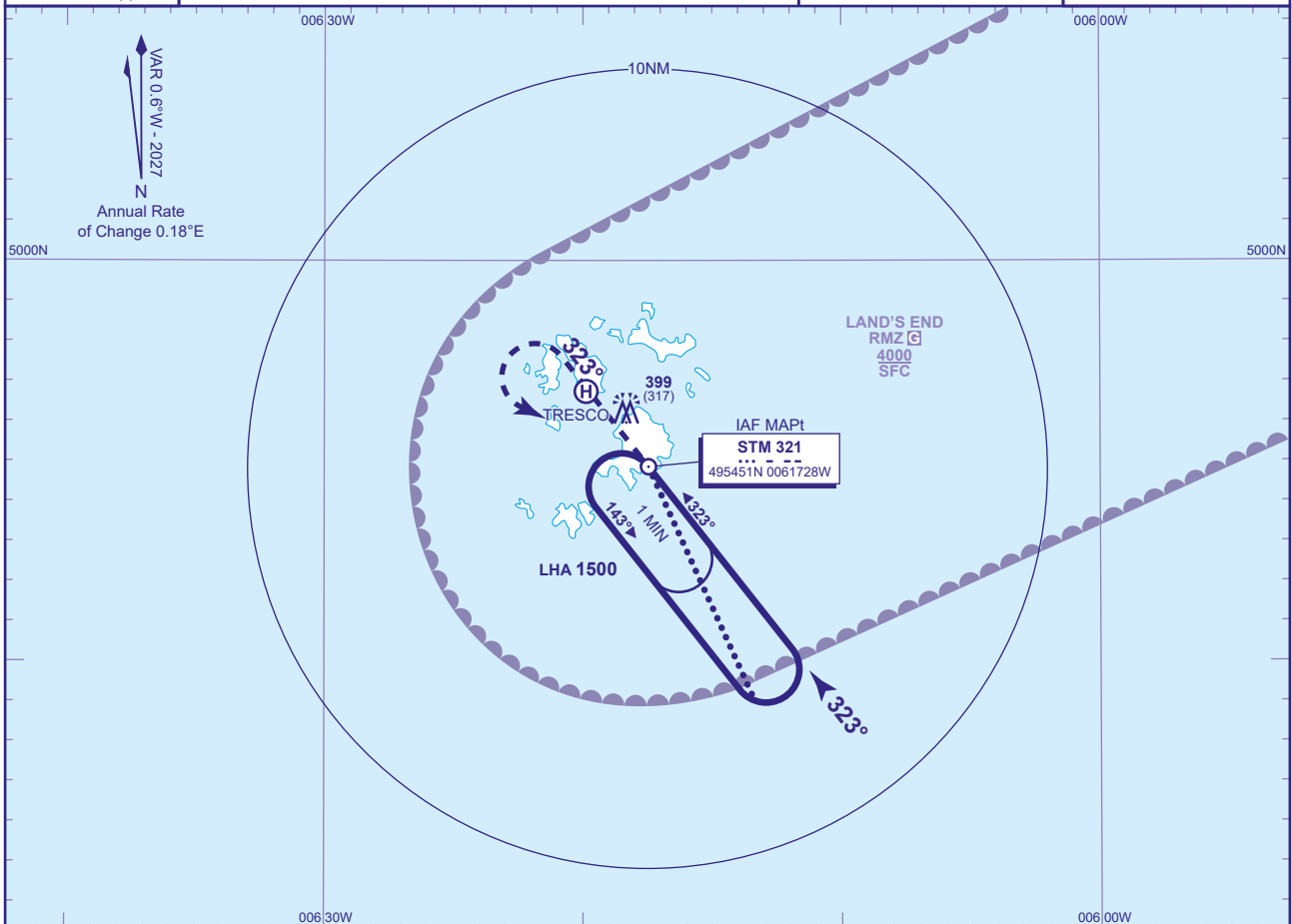
RWY 32

(ACFT CAT A)



|     |         |                   |                               |     |
|-----|---------|-------------------|-------------------------------|-----|
| APP | 124.880 | SCILLIES APPROACH | AD ELEVATION                  | 121 |
| TWR | 124.880 | SCILLIES TOWER    | THR ELEVATION                 | 82  |
|     |         |                   | OBSTACLE ELEVATION            |     |
|     |         |                   | 399 AMSL<br>(317) (ABOVE THR) |     |
|     |         |                   | BEARINGS ARE MAGNETIC         |     |

TRANSITION ALTITUDE  
3000



| Aircraft Category     |                       | A        |
|-----------------------|-----------------------|----------|
| OCA<br>(OCH)          | Procedure             | 500(418) |
|                       | Total Area            | 700(579) |
| VM(C)OCA<br>(OCH AAL) | South of<br>RWY 09/27 | 520(399) |
|                       |                       |          |

### ALTERNATIVE BASE TURN PROCEDURE

Overhead NDB(L) STM (IAF) at **1500**(1418) fly outbound on NDB(L) STM QDR 157° for 2.5 MIN. Base turn left onto FAT. When established descend to MDA.

**NOTE** FAT is offset 3° from RWY C/L and intercepts the RWY C/L 0.9NM before the THR.

**CHANGE (2/26):** MAG INFO REVISED. MAG HEADINGS.